



**FEDERATION**  
OF COMMUNITY LEGAL CENTRES VIC

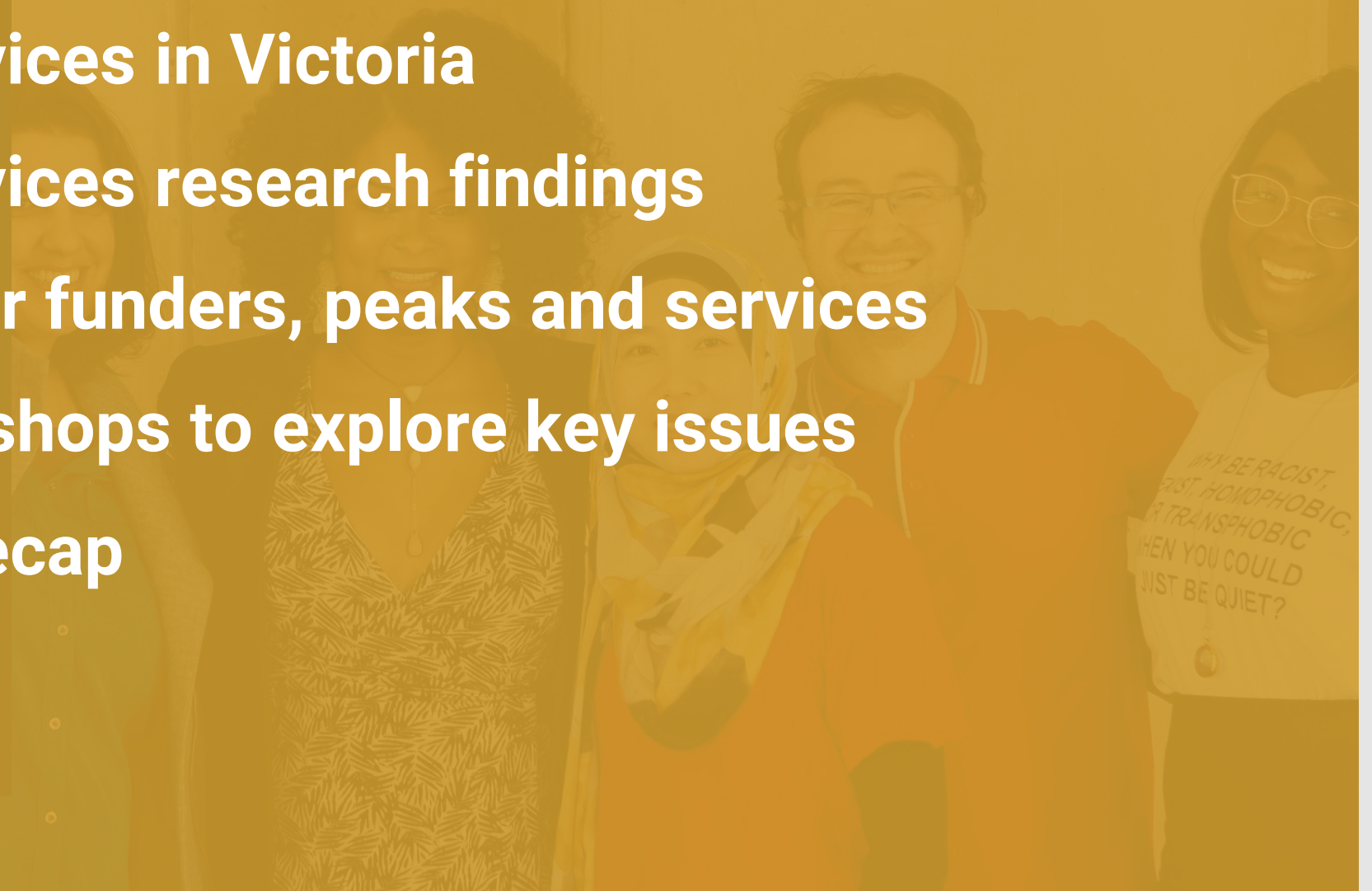
# Adaptive community responses: Lessons from integrated service delivery

WHY BE RACIST,  
HOMOPHOBIC,  
OR TRANSPHOBIC,  
WHEN YOU COULD  
JUST BE QUIET?

# Agenda

---

- Integrated services in Victoria
- Integrated services research findings
- Implications for funders, peaks and services
- Practical workshops to explore key issues
- Regroup and recap



---

# Integrated services

- Long history of collaboration and integration
- Funding – LSB and Vic government
- Integrated services are diverse
- Strengths-based, wrap-around, client focused



# Research Advisory Group

---

- Department of Justice and Community Safety
- Victoria Law Foundation
- Eastern Community Legal Centre
- Centre for Innovative Justice
- Health Justice Australia



# Key components of the research

- **Consultation with key stakeholders**
- **Literature review**
- **Telephone interviews with CLCs and partners**
- **Sector-wide perspective - submissions and survey**
- **Four descriptive case studies**
- **Short film profiling key messages**

---

## The lessons so far...


- **Partnerships are key**
- **Client-centred and trauma informed practice is critical**
- **One size does not fit all**
- **Interprofessional learning supports partners to deliver effective services**
- **Evaluation is valued by the sector but more support is needed**



# Community of Practice

---

- Opportunity to share knowledge and insights
- Exploring thematic areas, eg:
  - Monitoring and Evaluation
  - Cross Disciplinary knowledge sharing
  - Strengthening partnerships



WHY BE RACIST,  
FIRST, HOMOPHOBIC,  
OR TRANSPHOBIC,  
WHEN YOU COULD  
JUST BE QUIET?

# THANK YOU

Phone: 03 9652 1500

Email: [administration@fclc.org.au](mailto:administration@fclc.org.au)

Social: @CommunityLawVic

*Community Legal Centres are  
the heart of a movement for justice.*

